

REGISTRATION:

Participation at this meeting is free if you have paid your annual membership fee. However, for logistic reasons, we require pre-registration online @ www.bvn-sbn.be or by email at info@bvn-sbn.be

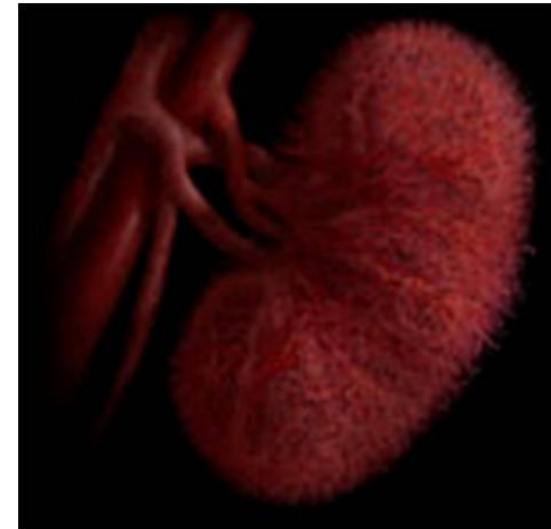
ACCREDITATION:

Accreditation has been requested.

S Belgische Vereniging voor Nefrologie
B V N Société Belge de Néphrologie
N Belgian Society of Nephrology

Annual Meeting

Thursday April 30th, 2015
12h00 – 17h40



Musée de la Médecine
Campus Erasme
Route de Lennik 808
1070 Bruxelles

PROGRAM

12h00 – 13h00	Lunch and registration
13h00 – 13h05	Welcome by the president
13h05 – 13h45	INVITED LECTURE Recent advances in the management of autosomal dominant polycystic kidney disease Y. Pirson
13h45 – 15h15	FREE COMMUNICATIONS I Evodial plus citrate containing dialysate is non-inferior to regional citrate anticoagulation <i>C. Metalidis, A. De Winter, D. Kuypers, P. Evenepoel, B. Meijers</i> PACAP deficiency as a cause of increased platelet aggregability <i>B. Eneman, K. Freson, L. van den Heuvel, E. Van hoyweghen, L. Collard, J. Vande Walle, C. Van Geet, E. Levchenko</i> Joubert Syndrome in Three Siblings <i>M. Dacx, B. Loeys, H. Hoeben, M. Helbert, J. Vandewalle</i> Quality control in a Belgian peritoneal dialysis unit <i>P.-J. Van Gaal, C. Simons, K. Wouters, V. Kovacic, R. Hellemans, D. Abramowicz, M.M. Gouttenye</i> Phosphate metabolism in children with autosomal dominant polycystic kidney disease <i>S. De Rechter, J. Bacchetta, L. Dubourg, P. Cochat, M. Van Dyck, P. Evenepoel, E. Levchenko, D. Mekahli</i> Soluble CD14, a marker of endotoxemia, associates with survival and cardiovascular disease in patients with CKD <i>R. Poesen, I. Barrows, A. Ramezani, P. Evenepoel, K. Claes, B. Meijers, D. Raj</i> Chronic Kidney Disease in Ambulatory Renal Care Clinic - 5-years Outcome of a sample CKD Cohort stage 3b-5 <i>J. De Meester, W. Van Biesen, B. De Moor, W. Lemahieu, NBVN</i> Soluble CD14, a marker of endotoxemia, associates with progression of CKD <i>R. Poesen, P. Evenepoel, A. Ramezani, K. Claes, A. Jian, B. Meijers, D. Raj</i> Long-term renal outcome of a large cohort of patients with tuberous sclerosis complex <i>K. Van Hoeve, L. De Waele, P. Janssens, K. Claes, L. Lagae, E. Levchenko, B. Bammens, A. Jansen, D. Mekahli</i>
15h15 – 15h45	BREAK

15h45 – 16h30	INVITED LECTURE The future in uremic toxic removal R. Vanholder
16h30 – 17h10	CASE REPORT Clinical case report : A rare cause of acute kidney failure – tissue is the issue! <i>W. Heggermont, G. Verhaef, P. Evenepoel, B. Sprangers, E. Lerut, T. Tousseyn, K. Claes</i> Tricky Images for the Nephropathologist – HIV Nephropathy or Extracapillary glomerulonephritis? <i>M. Garjaul, C. Catalanol, M. Depierreux, K Van Den Haute, KM Wissing, C. Martin</i> NSAID associated nephrotoxicity in a 3 year old boy presenting with a pneumonia <i>H. Baeten, M. Dacx</i> Relapsing Nephrotic Syndrome as a consequence of [immune-deposit-negative] non-IgA Mesangioproliferative Glomerulonephritis" in a 4 year old African Girl <i>M. Dacx, M. Helbert, V. Siozopoulou, J. Vandewalle</i>
17h10 – 18h10	FREE COMMUNICATIONS II FLuid REsuscitation with Sterofundin® versus NaCl 0.9% (FLURES): Do Balanced Crystalloids Make a Difference? <i>M. Hemeryck, F. Viaene, M. Bourgeois, J. Decruyenaere, E. Hoste</i> Is the incidence of renal replacement therapy in Belgium and Westernized countries declining? <i>V. De Meyer, J. De Meester, F. Collart, D. Abramowicz</i> Risk factors for kidney stones and the impact of preventive measures. A retrospective cohort study of patients attending an outpatient kidney stone clinic. <i>T. Van Meerhaeghe, KM Wissing, C. Tielemans</i> Metabolomic study of mouse kidney and urine in ischemia/reperfusion injury <i>J. Leenders, L. Poma, J.-D. Defraigne, JM. Krzesinski, P. de Tullio, Fr. Jouret</i> Is unilateral ischemic AKI induced fibrosis a suitable model for therapeutic intervention studies? <i>N. Le Clef, B. Riser, P. D'Haese, B. Vervaet</i> Impact of timing administration of mesenchymal stromal cells on serum creatinine following renal ischemia/reperfusion in rats <i>P. Erpicum, P. Rowart, L. Poma, JM Krzesinski, D. Detry, F. Jouret</i>
18h10 – 18h20	CLOSING REMARKS - AWARDS AND FAREWELL
18h20 – 18h40	GENERAL ASSEMBLY BVN-SBN MEMBERS

